

AAgWa Crop Production Forecasts Brief Series

Burkina Faso – Millet

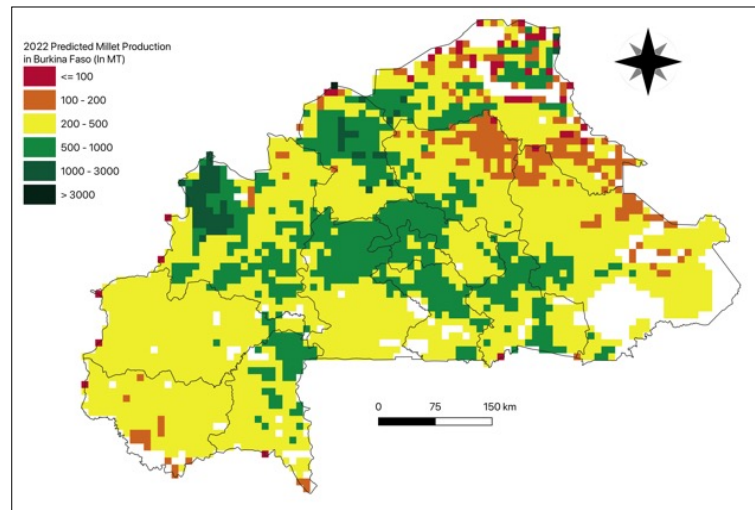
Aissatou Ndoye*, Khadim Dia**, and Racine Ly***

No. 04, February 2023

The crop production forecast brief series by AKADEMIYA2063's Africa Agriculture Watch (AAgWa) aims to provide more accurate and timely data on harvest and yields for nine major crops across nearly 50 African countries. The timeliness, wide availability, and easy access to this type of data will allow stakeholders across the value chain to better plan and execute policy and business actions more efficiently. The data published in the briefs are generated through the Africa Crop Production (AfCP) model, an Artificial Intelligence (AI-based) model applied to remotely sensed geobiophysical data to produce estimates at pixel as well as administrative levels as early as the beginning of every growing season. In Brief 4, we provide forecasts on Millet production in Burkina Faso.

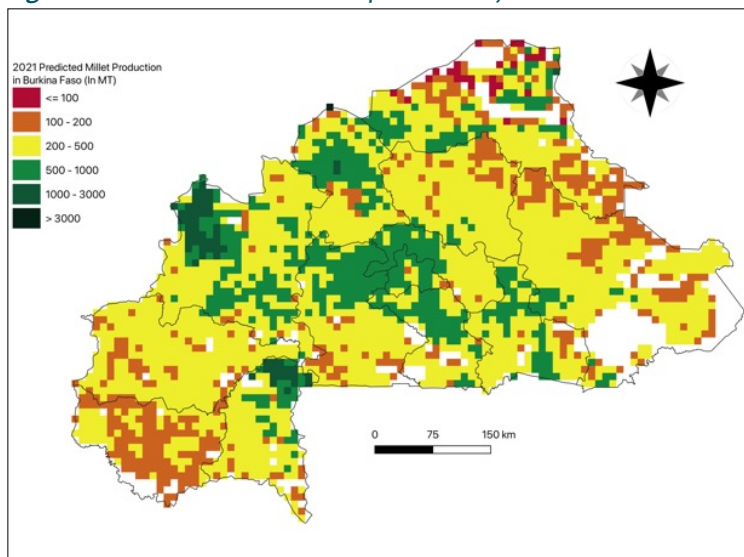
Millet production in Burkina Faso is projected to reach 1,218,924 metric tons in 2022, indicating an increase of 116,032 MT over 2021 production levels. However, the most significant production levels are expected in the northern and central areas, particularly in Kossi (Boucle du Mouhoun), Soum (Sahel), Yatenga (Nord), Gourma (Est), Houet (Haut-Bassins), and Mouhoun (Boucle du Mouhoun) with production values estimated at 88,313 MT, 63,499

Figure 1. Burkina Faso 2022 millet production forecast.



Data Source: Africa Agriculture Watch (www.aagwa.org).

Figure 2. Burkina Faso 2021 millet production forecast.



Data Source: Africa Agriculture Watch (www.aagwa.org).

MT, 61,788 MT, 49,193 MT, 44,041 MT, and 41,132 MT, respectively. On the other hand, lower production volumes compared to 2021 are observed in provinces such as Zondoma (Nord), Nounbiel (Sus-Ouest), Léraba (Cascades), Kompienga (Est), and Nahouri (Centre-Sud) with total production evaluated at 6,671 MT, 7,358 MT, 9,234 MT, 9,573 MT, and 12,997 MT, respectively.

However, the provinces of Yatenga (Nord), Soum (Sahel), Sanmatenga (Centre-Nord), Comoé (Cascades), and Gourma (Est) are expected to experience the most significant increases in millet production levels in 2022 exceeding 5,000 MT, evaluated at respectively at 12,319 MT, 9,417 MT, 6,241 MT, 5,826 MT, and 5,423 MT.

*Associate Scientist, Department of Data Management, Digital Products, and Technology, AKADEMIYA2063


** Senior Associate Scientist, Department of Data Management, Digital Products, and Technology, AKADEMIYA2063

***Director, Department of Data Management, Digital Products, and Technology, AKADEMIYA2063



Annex – 2022 Burkina Faso Millet Production Forecast at District level

Regions	Provinces	2022 Prod (MT)	2021 Prod (MT)	Absolute Difference (MT)	Relative Difference (%)
Boucle du Mouhoun	Balé	20591	18542	2049	11%
Boucle du Mouhoun	Banwa	27487	24339	3148	13%
Boucle du Mouhoun	Kossi	88313	83915	4397	5%
Boucle du Mouhoun	Mouhoun	41133	40014	1119	3%
Boucle du Mouhoun	Nayala	20150	18286	1864	10%
Boucle du Mouhoun	Sourou	25007	24152	855	4%
Cascades	Comoé	38110	32284	5826	18%
Cascades	Léraba	9234	8623	611	7%
Centre	Kadiogo	18248	17822	426	2%
Centre-Est	Boulgou	35480	31716	3763	12%
Centre-Est	Koulpélogo	23721	21180	2541	12%
Centre-Est	Kouritenga	17879	17134	745	4%
Centre-Nord	Bam	19165	14437	4728	33%
Centre-Nord	Namentenga	21792	21504	287	1%
Centre-Nord	Sanmatenga	40183	33941	6241	18%
Centre-Ouest	Boulkiemdé	31222	30365	857	3%
Centre-Ouest	Sanguié	31021	28899	2121	7%
Centre-Ouest	Sissili	23075	19474	3600	18%
Centre-Ouest	Ziro	20108	18194	1915	11%
Centre-Sud	Bazèga	24920	24816	104	0%
Centre-Sud	Nahouri	12997	11498	1499	13%
Centre-Sud	Zoundwéogo	21945	21255	690	3%
Est	Gnagna	30768	28732	2036	7%
Est	Gourma	49193	43770	5423	12%
Est	Komandjoari	13924	12446	1478	12%
Est	Kompienga	9573	8322	1251	15%
Est	Tapoa	30767	27594	3172	11%
Haut-Bassins	Houet	44041	38897	5144	13%
Haut-Bassins	KénéDougou	29187	23931	5256	22%
Haut-Bassins	Tuy	23104	20564	2540	12%
Nord	Loroum	24509	20595	3914	19%
Nord	Passoré	19131	14957	4174	28%
Nord	Yatenga	61788	49470	12319	25%
Nord	Zonoma	6671	4940	1731	35%
Plateau-Central	Ganzourgou	20568	18617	1951	10%
Plateau-Central	Kourwéogo	13051	12087	964	8%
Plateau-Central	Oubritenga	19752	18333	1419	8%



Regions	Provinces	2022 Prod (MT)	2021 Prod (MT)	Absolute Difference (MT)	Relative Difference (%)
Sahel	Oudalan	32653	28319	4335	15%
Sahel	Séno	21229	23542	-2313	-10%
Sahel	Soum	63499	54082	9417	17%
Sahel	Yagha	13810	13394	416	3%
Sud-Ouest	Bougouriba	17905	17894	11	0%
Sud-Ouest	Ioba	22801	25868	-3067	-12%
Sud-Ouest	Noumbiel	7358	6875	482	7%
Sud-Ouest	Poni	31865	27271	4594	17%
Total		1218924	1102892	116032	11%

Notes: MT (Metric ton): 1 MT is equivalent to 1,000 kilograms

Absolute Difference: 2022 Prod – 2021 Prod

Relative Difference: (2022 – 2021) / 2021

Suggested Citation: Ndoye, A., K. Dia, and R. Ly. 2023. *AAgWa Crop Production Forecasts Brief Series: Burkina Faso – Millet*. AAgWa Crop Production Forecasts Brief Series, No.4. Kigali, Rwanda: AKADEMIYA2063. <https://doi.org/10.54067/acpf.04>